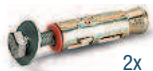


CABINETS SERIES STANDARD CS



FLOOR FIXING SET



2x

- 2 "HILTI" plugs for concrete floors \geq to classes B25/RBK250/MP_A 25 N/mm²
- Recommended traction of the plug: 2.9 KN
- Plug diameter: \varnothing 6 mm

ORD. NO. F AG 9204 00 99



The lock on the door in figure **A** closes or opens the lower door in figure **B** at the same time

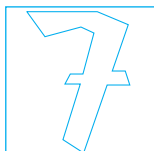
RAL 7000 F.01

RAL 6011 F.02

RAL 5012 F.04

RAL 7035 F.08

SUPPLEMENTARY PARTS ■



- **Spare key.** Always indicate the number on the cylinder lock of the key to be replaced.

ORD. NO. R CSC 0002 00

- **Master key.** This type of key opens all the 45 and 46 series locks.

ORD. NO. R CSC 0001 00



LENGTH = 717 mm DEPTH = 635 mm

CABINETS SERIES STANDARD CS

Polycarbonate door with safety lock.
Useful dimensions:
660x525 mm h.

Suitable for monitor sizes up to 21".
Internal dimensions of upper compartment:
690x600x580 mm h.

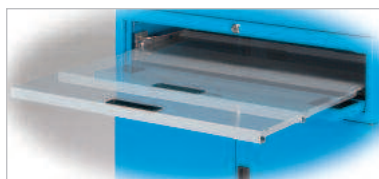
Retractable keyboard shelf.
Useful dimensions:
620x510 mm h.

The lower compartment can be fitted with retractable and height adjustable shelves for housing hardware systems and printers.
Internal dimensions :
690x600x720 mm h.



Room temperature for use -5/+40 °C with umidity up to 50%
Room temperature for use -5/+20 °C with umidity up to 90%

3 The retractable keyboard shelf can be locked in two different positions and it is generously sized to make place for work accessories and make it more comfortable to use the keyboard.
1 mouse pad, 2 floor brackets, 12 plastic caps and 2 levelling devices are supplied standard with the cabinet.



7 The electrical system (protected by IP 30) of each computer cabinet is standard supplied with a 230V 10A circuit breaker and tested with a special tester according to the CEI EN 60204-1, with the following tests:
- continuity of the earth circuit
- applied voltage
- insulation resistance



■ **Cabinet with or without plinths**
Cabinet load capacity: 400 kg
Load capacity of the adjustable shelf: 100 kg
Load capacity of the retractable shelf: 50 kg
■ **Cabinet with wheels**
Cabinet load capacity: 400 kg.
Load capacity of the adjustable shelf: 100 kg
Load capacity of the retractable shelf: 25 kg*
*Attention: the load capacity may be increased by 100% if the cabinet already contains a 50 kg load.

9 Adjust the external length of the power cable by unscrewing the relative cable holder. The dual protection power cable is 3 metres long.

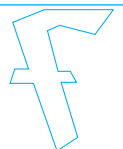


■ KEY

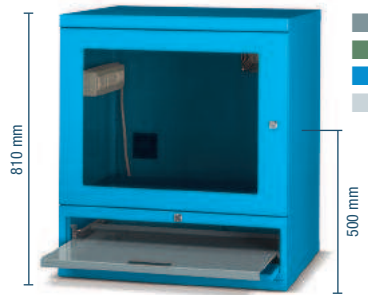
RAL 7000 F.01 RAL 6011 F.02 RAL 5012 F.04 RAL 7035 F.08



■ All indicated loads are net and refer to evenly distributed weights



CABINETS SERIES STANDARD CS

**Dimensions mm 717x635x810 h**

Complete with: 1 height adjustable shelf, 1 retractable keyboard shelf

Computer cabinet **ORD. NO. F AS 0801 11 08**

ORD. NO. with 1 fan	type and number of wired sockets:					
	D	F	GB	I	CH	IL
F AS 0801 11 04	5	-	-	-	-	-
F AS 0801 21 04	2	3	-	-	-	-
F AS 0801 31 04	2	-	2	-	-	-
F AS 0801 41 04	2	-	-	3	-	-
F AS 0801 51 04	2	-	-	-	3	-
F AS 0801 71 04	2	-	-	-	-	3

ORD. NO. with 2 fans	type and number of wired sockets:					
	D	F	GB	I	CH	IL
F AS 0802 11 04	5	-	-	-	-	-
F AS 0802 21 04	2	3	-	-	-	-
F AS 0802 31 04	2	-	2	-	-	-
F AS 0802 41 04	2	-	-	3	-	-
F AS 0802 51 04	2	-	-	-	3	-
F AS 0802 71 04	2	-	-	-	-	3

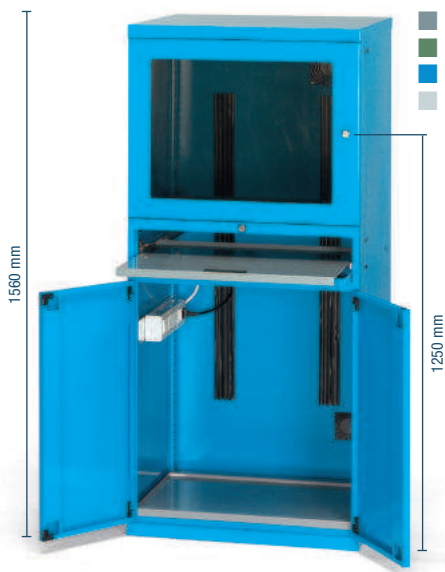


RAL 7035



LENGTH = 717 mm DEPTH = 635 mm

CABINETS SERIES STANDARD CS



Dimensions mm 717x635x1560 h
complete with: 2 height adjustable shelves, 1 retractable keyboard shelf

ORD. NO. with 1 fan	type and number of wired sockets:					
	D	F	GB	I	CH	IL
F AS 1601 11 04	5	-	-	-	-	-
F AS 1601 21 04	2	3	-	-	-	-
F AS 1601 31 04	2	-	2	-	-	-
F AS 1601 41 04	2	-	-	3	-	-
F AS 1601 51 04	2	-	-	-	3	-
F AS 1601 71 04	2	-	-	-	-	3

ORD. NO. with 2 fans	type and number of wired sockets:					
	D	F	GB	I	CH	IL
F AS 1602 11 04	5	-	-	-	-	-
F AS 1602 21 04	2	3	-	-	-	-
F AS 1602 31 04	2	-	2	-	-	-
F AS 1602 41 04	2	-	-	3	-	-
F AS 1602 51 04	2	-	-	-	3	-
F AS 1602 71 04	2	-	-	-	-	3

can contain big tower



Computer cabinet
ORD. NO. F AS 1601 12 04
with 2 multi-purpose supports
ORD. NO. F AS 2250 00 07

"Dark light" lamp with three joints
ORD. NO. F BL 9980 00 08



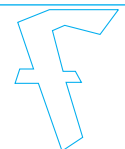
Cabinet with writing desk ORD. NO. F AA 0110 00 04 Polyurethane chair ORD. NO. F QZ 2211 00 07

KEY

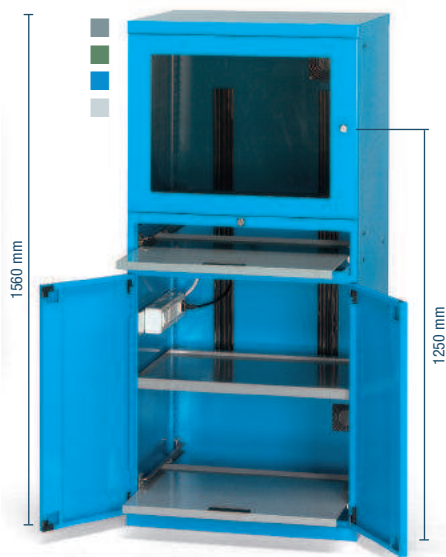
RAL 7000 F.01 RAL 6011 F.02 RAL 5012 F.04 RAL 7035 F.08



The cabinets must be secured to the floor



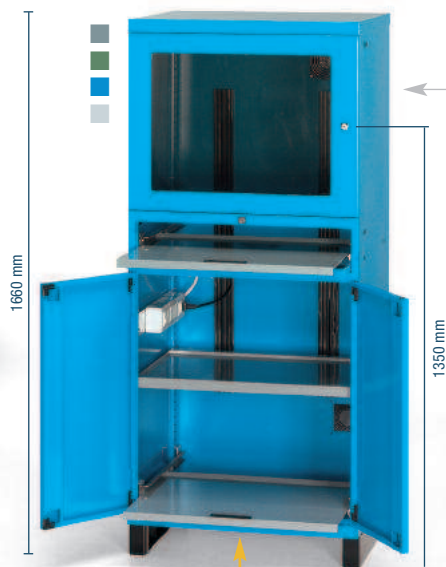
CABINETS SERIES STANDARD CS



Dim. mm 717x635x1560 h
 Complete with:
 2 height adjustable shelves
 1 retractable keyboard shelf
 1 retractable shelf

ORD. NO. with 1 fan	type and number of wired sockets:					
	D	F	GB	I	CH	IL
F AS 1601 12 04	5	-	-	-	-	-
F AS 1601 22 04	2	3	-	-	-	-
F AS 1601 32 04	2	-	2	-	-	-
F AS 1601 42 04	2	-	-	3	-	-
F AS 1601 52 04	2	-	-	-	3	-
F AS 1601 72 04	2	-	-	-	-	3

ORD. NO. with 2 fans	type and number of wired sockets:					
	D	F	GB	I	CH	IL
F AS 1602 12 04	5	-	-	-	-	-
F AS 1602 22 04	2	3	-	-	-	-
F AS 1602 32 04	2	-	2	-	-	-
F AS 1602 42 04	2	-	-	3	-	-
F AS 1602 52 04	2	-	-	-	3	-
F AS 1602 72 04	2	-	-	-	-	3



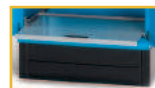
Dim. mm 717x635x1660 h
 Complete with:
 2 height adjustable shelves
 1 retractable keyboard shelf
 1 retractable shelf
 1 pair of 100 mm h base plinths without facing piece

Facing piece for base plinths 100 mm h



Dim. mm 717x635x1760 h
 Complete with:
 2 height adjustable shelves
 1 retractable keyboard shelf
 1 retractable shelf
 1 pair of 200 mm h base plinths without facing piece

Facing piece for base plinths 200 mm h



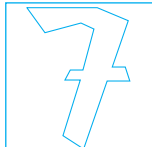
ORD. NO. with 1 fan	type and number of wired sockets:					
	D	F	GB	I	CH	IL
F AS 1601 14 04	5	-	-	-	-	-
F AS 1601 24 04	2	3	-	-	-	-
F AS 1601 34 04	2	-	2	-	-	-
F AS 1601 44 04	2	-	-	3	-	-
F AS 1601 54 04	2	-	-	-	3	-
F AS 1601 74 04	2	-	-	-	-	3

ORD. NO. with 2 fans	type and number of wired sockets:					
	D	F	GB	I	CH	IL
F AS 1602 14 04	5	-	-	-	-	-
F AS 1602 24 04	2	3	-	-	-	-
F AS 1602 34 04	2	-	2	-	-	-
F AS 1602 44 04	2	-	-	3	-	-
F AS 1602 54 04	2	-	-	-	3	-
F AS 1602 74 04	2	-	-	-	-	3

ORD. NO. with 1 fan	type and number of wired sockets:					
	D	F	GB	I	CH	IL
F AS 1601 15 04	5	-	-	-	-	-
F AS 1601 25 04	2	3	-	-	-	-
F AS 1601 35 04	2	-	2	-	-	-
F AS 1601 45 04	2	-	-	3	-	-
F AS 1601 55 04	2	-	-	-	3	-
F AS 1601 75 04	2	-	-	-	-	3

ORD. NO. with 2 fans	type and number of wired sockets:					
	D	F	GB	I	CH	IL
F AS 1602 15 04	5	-	-	-	-	-
F AS 1602 25 04	2	3	-	-	-	-
F AS 1602 35 04	2	-	2	-	-	-
F AS 1602 45 04	2	-	-	3	-	-
F AS 1602 55 04	2	-	-	-	3	-
F AS 1602 75 04	2	-	-	-	-	3

RAL 7000 F.....01 RAL 6011 F.....02 RAL 5012 F.....04 RAL 7035 F.....08



■ All indicated loads are net and refer to evenly distributed weights



SUPPLEMENTARY PARTS ■

- 2 "HILTI" plugs for concrete floors ≥ to classes B25/RBK250/MPa 25 N/mm²
- Recommended traction of the plug: 2.9 KN
- Plug diameter: Ø 6 mm

ORD. NO. F AG 9204 00 99



LENGTH = 717 mm DEPTH = 635 mm

CABINETS SERIES STANDARD CS

MULTI-PURPOSE SUPPORT



ORD. NO. F AS 2250 00 07

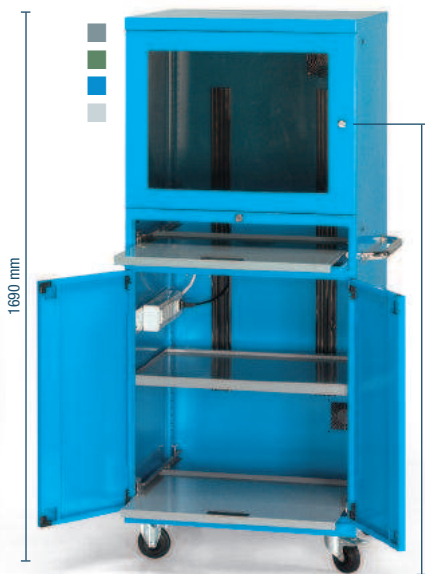
07



4 position for the multi-purpose support (2 to the right side and 2 to the left side of the cabinet).



Cabinet **ORD. NO. F AS 1601 15 04** with base plinth and facing piece **ORD. NO. F RR 0645 01 07**



handling with a transpallet



Dim. mm 717x635x1690 h
 Complete with:
 2 height adjustable shelves
 1 retractable keyboard shelf
 1 retractable shelf
 2 swivel nylon wheels with brake
 2 fixed nylon wheels Ø 100 mm

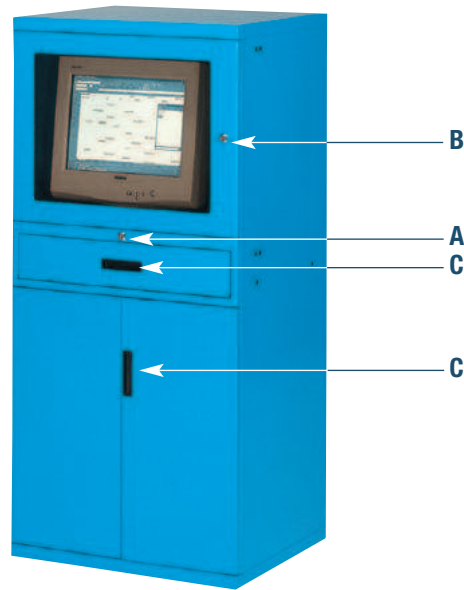
ORD. NO. with 1 fan	type and number of wired sockets:					
	D	F	GB	I	CH	IL
F AS 1601 13 04	5	-	-	-	-	-
F AS 1601 23 04	2	3	-	-	-	-
F AS 1601 33 04	2	-	2	-	-	-
F AS 1601 43 04	2	-	-	3	-	-
F AS 1601 53 04	2	-	-	-	3	-
F AS 1601 73 04	2	-	-	-	-	3

ORD. NO. with 2 fans	type and number of wired sockets:					
	D	F	GB	I	CH	IL
F AS 1602 13 04	5	-	-	-	-	-
F AS 1602 23 04	2	3	-	-	-	-
F AS 1602 33 04	2	-	2	-	-	-
F AS 1602 43 04	2	-	-	3	-	-
F AS 1602 53 04	2	-	-	-	3	-
F AS 1602 73 04	2	-	-	-	-	3



CABINETS SERIES STANDARD CS

EMPTY CABINET



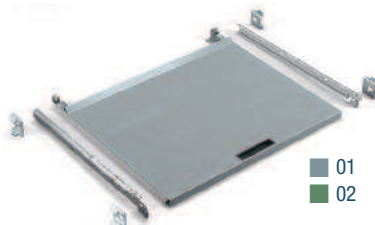
ORD. NO. _____ **LOAD CAPACITY kg** _____

F AS 1600 01 04 **400**
 overall dimensions mm **717x635x1560 h**
 Int. dim. of upper compartment mm **690x600x580 h**
 Int. dim. of lower compartment mm **690x600x720 h**
Attention: to the computer cabinet it is possible to apply wheels with Ø 100/125/150 mm only

■ Wheels see page A52

ORD. NO. _____

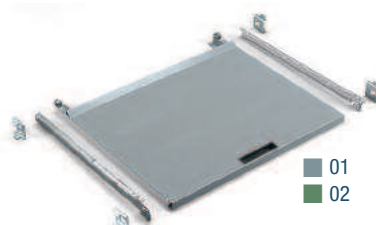
R CSR 0027 00
 Spare lock (for central lock) ref. A
R CSR 0026 00
 Spare lock (for polycarbonate doors) ref. B
R XAS 0002 99
 Spare rod (for pair of doors)
R XDA 0002 07
 Spare handle (for doors) ref. C



RETRACTABLE SHELF

ORD. NO. _____ **LOAD CAPACITY kg** _____

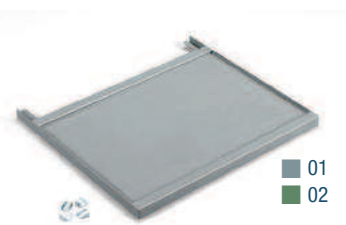
F AS 2360 00 01 **50**
 Overall dimensions mm **650x585x25 h**
 Usable dimensions mm **620x510**



RETRACTABLE KEYBOARD SHELF

ORD. NO. _____ **LOAD CAPACITY kg** _____

F AS 2350 00 01 **50**
 Overall dimensions mm **650x585x25 h**
 Usable dimensions mm **620x510**



ADJUSTABLE SHELF

ORD. NO. _____ **LOAD CAPACITY kg** _____

F AS 2040 01 01 **100**
 Overall dimensions mm **690x595x35 h**
 Usable dimensions mm **685x510**



PAIR OF PLINTHS FOR TRANSPALLET 100 mm h

ORD. NO. _____

F RR 1625 00 07 Plinths height 100 mm
F RR 0645 00 07 Facing piece



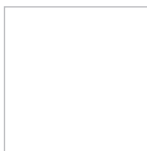
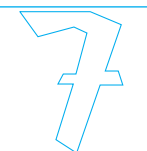
PAIR OF PLINTHS 200 mm h

ORD. NO. _____

F RR 1635 00 07 Plinths height 200 mm
F RR 0645 01 07 Facing piece

RAL 7000 F.01 RAL 6011 F.02 RAL 5012 F.04 RAL 7035 F.08

SUPPLEMENTARY PARTS ■



■ All indicated loads are net and refer to evenly distributed weights

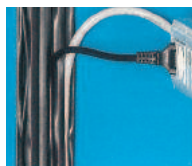


■ **Spare key.** Always indicate the number on the cylinder lock of the key to be replaced.
 ORD. NO. R CSC 0002 00
 ■ **Master key.** This type of key opens all the 45 and 46 series locks.
 ORD. NO. R CSC 0001 00



LENGTH = 717 mm DEPTH = 635 mm

CABINETS SERIES STANDARD CS

**PROFILE****ORD. NO.****C ME 99 018**

1000 mm long 4-channel plastic cable duct

**GRILLES****ORD. NO.****F AS 3210 00 00**

External grille complete with dust filter

**HANDLE****ORD. NO.****F AG 9300 00 07****FAN****ORD. NO.****F AS 3220 00 00**

220V wired fan complete with grilles and Schuko plug

ELECTRICAL SYSTEM

The electrical system (protected by **IP 30**) is supplied with one 230V 10A circuit breaker, five 220-250V 10A 2P+E sockets and one 220-250V 16A 2P+E heavy-duty plug

ORD. NO.	type and number of wired sockets:					
	D	F	GB	I	CH	IL
F AS 4100 10 00	5	-	-	-	-	-
F AS 4100 20 00	2	3	-	-	-	-
F AS 4100 30 00	2	-	2	-	-	-
F AS 4100 40 00	2	-	-	3	-	-
F AS 4100 50 00	2	-	-	-	3	-
F AS 4100 70 00	2	-	-	-	-	3

■ INFO


www.famispacom
