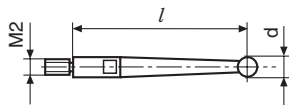


MarTest - Accessories

Styluses

with ruby contact point



Styluses

with carbide contact point



Spanner for changing the styluses

4305868



Model

Stylus-length l

Styluses

Carbide contact point

Ruby contact point

Cat.-no.

dia. 1 mm

d
dia. 2 mm

dia. 3 mm

Cat.-no.

d
dia. 2 mm

800 S/801 S1/801 S
800 SG/801 SG
800 SA
800 SGA
800 SM/801 SM
800 SGM/801 SGM
801 SGE
800 SR/801 SR
800 SRM/801 SRM
800 H/801 H
800 V/801 V
800 VGM/801 VGM

14.5 mm

800 ts

4305870

4305850

4305871

800 tsr

4309051

800 SGE 9.1 mm

800 te

4308851

4308850

4308852

800 ter

4309050

800 SL/801 SL
800 SGL/801 SGL } 41.24 mm

800 tl

4306851

4306850

4306853

800 tlr

4309053

800 SGB 32.3 mm

800 tb

4301851

4301850

4301852

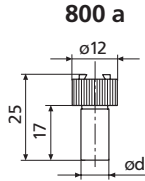
800 tbr

4309052

Martest - Accessories

Mounting shaft for dovetail

Mounting shaft	dia. d mm	Order no.
800 a8	8	4305865
800 a6	6	4301865
800 a4	4	4305885
800 a1/4	1/4"	4305895
800 a3/8	3/8"	4305875



Stand 801 p



- With swivel holder
- Base with V-groove 140°
- Total height 150 mm
- Mounting bore dia. 4 and 8 mm
- Column dia. 8 mm
- Base surface 65 x 40 mm

Order no. 4309090

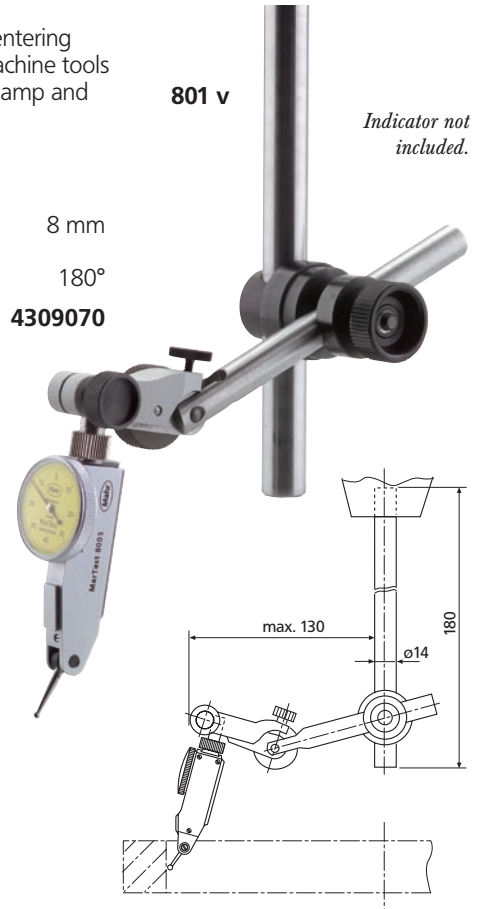
Indicator not included.

Centering support rods 801 v

- For aligning and centering work pieces on machine tools
- Swivel mounting clamp and fine adjustment
- Stainless steel rods

Mounting bore dia. 8 mm
Swivel range of mounting clamp 180°

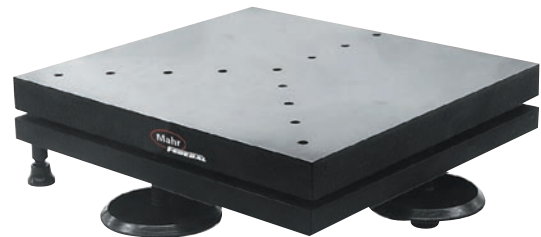
Order no. 4309070



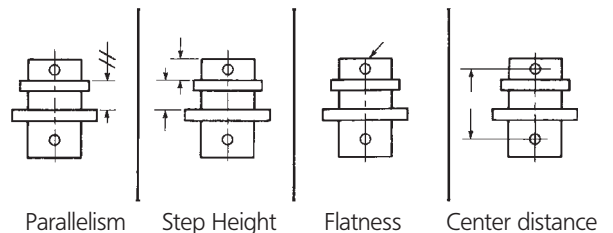
Leveling Table TE-20

Cuts set-up time 60% or more for many height gage measurements.

- The leveling table, TE-20, permits you to quickly bring the surface of a part into alignment with a surface plate in both planes. Completely eliminates shimming. Saves so much time that, used only occasionally, it will pay for itself in two weeks.
- The top plate is stress-relieved steel providing about 67 square inches of work area. It is drilled and tapped for fixtures. Fine pitch screws and large knobs assure precisely controlled adjustments. Works with any type of height gage.
- Operation is simple. Height gage readings are taken at edges of the surface to be aligned. Each plate, independently adjustable at right angles to the other, is angled as required for precise alignment.
Flatness = .025 mm / .001"



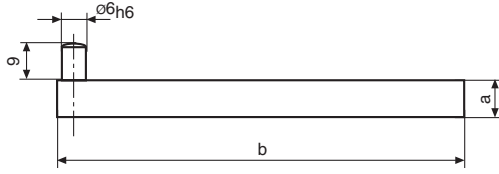
Typical checks which require careful positioning of work because rest surface is not sufficiently parallel to other work surfaces. Leveling Table compensates for error quickly, drastically reduces set-up time.



Adjustment	Top Plate	Bottom Plate
Total	± 1° 30'	± 1° 30'

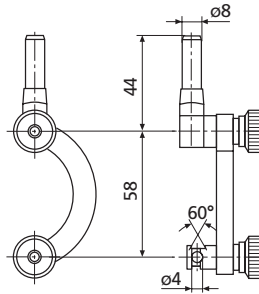
Martest - Accessories

Holder 800 h



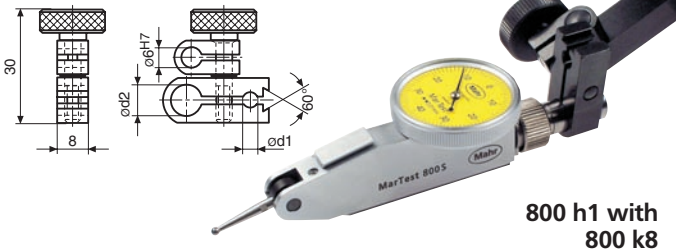
	Dimensions		Order no.
	a	b	
800 h1	9x9	100	4305888
800 h2	1/4" x 1/2"	4"	4305889

Universal centering support frame 800 b Order no. 4305893



Indicator not included.

Universal clamp 800 k

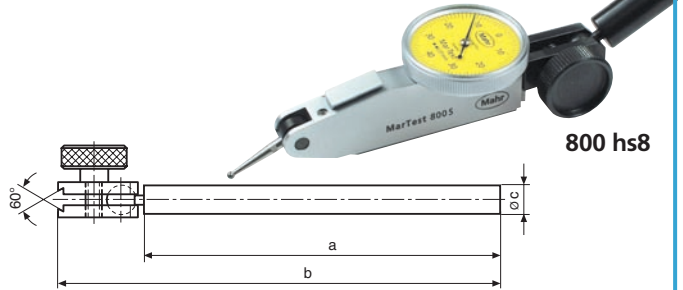


800 h1 with
800 k8

	Dimensions		Order no.
	dia. d1	dia. d2	
800 k8	4	8	4305891
800 k3/8	5/32"	3/8"	4305892

Indicator not
included.

Universal holder with dovetail clamp



800 hs8

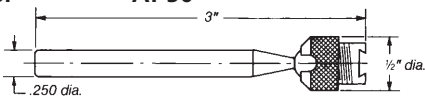
	Dimensions			Order no.
	a	b	dia. c	
800 hs8	100	124	8	4305886
800 hs3/8	4"	5"	3/8"	4305887

Indicator not
included.

Ball Clamp

- Dovetail and ball for indicator mounting and omni-directional orientation

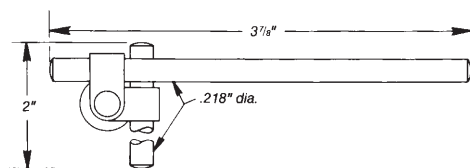
Order no. AT-50



Jig Borer Attachment

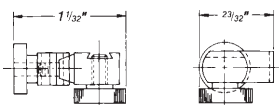
- Furnished with two rods and clamp for fast machine mounting

Order no. RD-21



Swivel Clamp

- Normally furnished with MarTest models. Allows indicator to be mounted on most indicator stands and fixtures

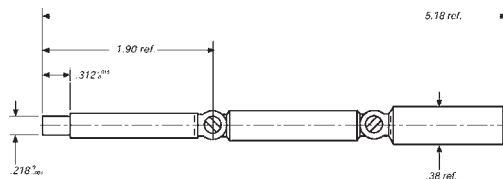


Order no. CP-2199

Double-jointed Clamp

- Reaches up to 127 mm / 5" with easy positioning for many applications including milling machine and Jig Borers

Order no. AT-100



Holding Bar

- Normally furnished with MarTest models. Three-inch length provides ample reach for most applications

Order no. HB-2157

