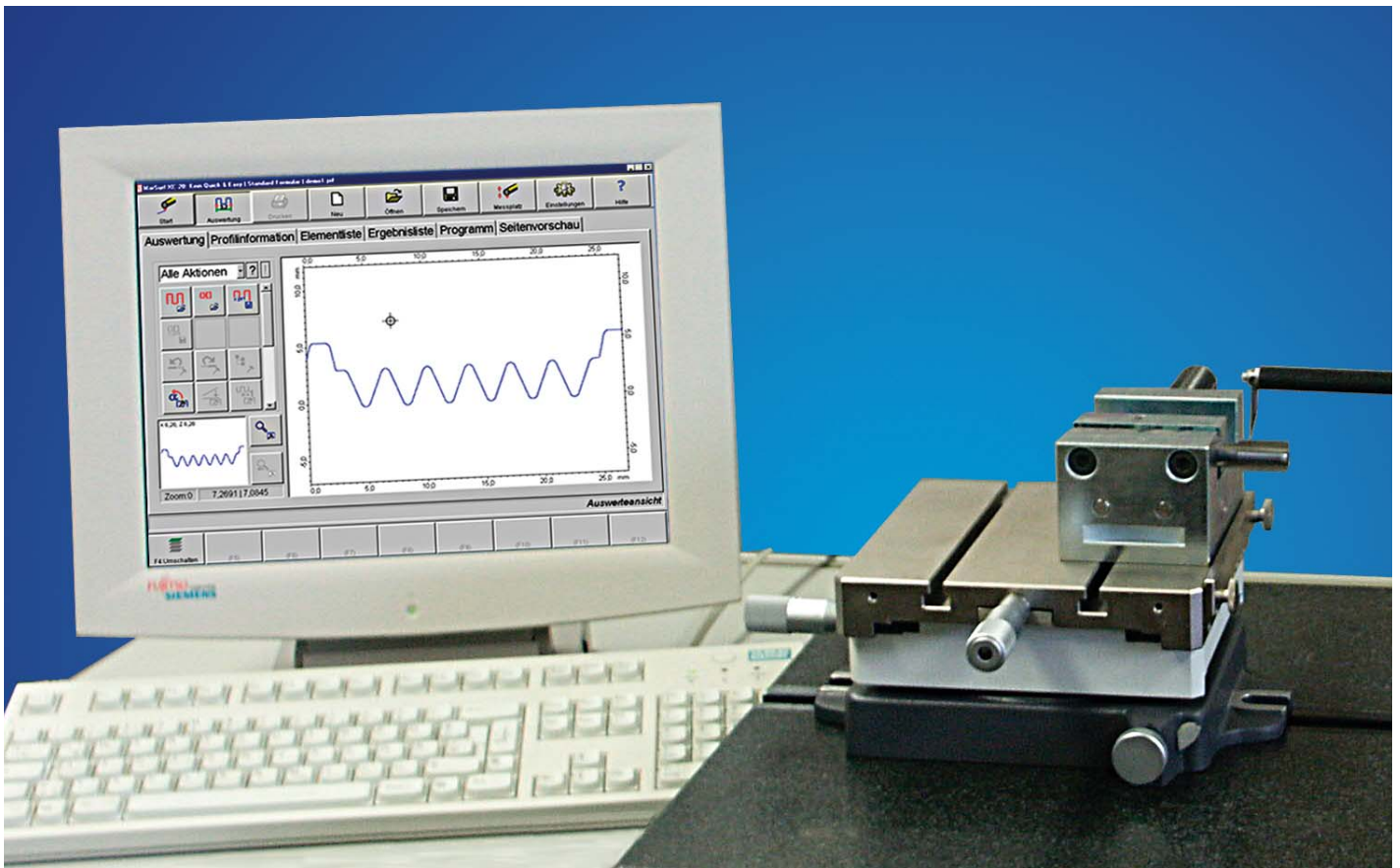


# MarSurf



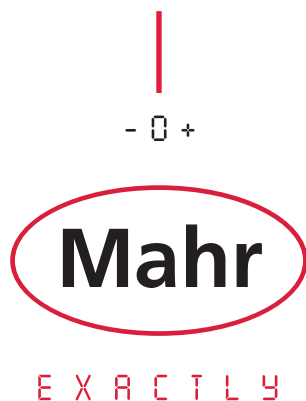
## MarSurf XC 20

**offers increased and a new user interface for your step into the new generation of contour metrology**

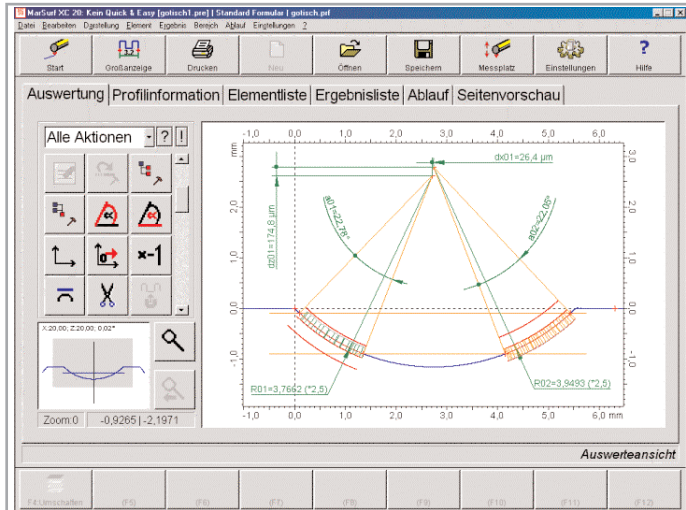
With this system you obtain a state-of-the-art contour measuring station which requires hardly any training and is tailor-made for each user. - You reduce costs and increase safety of your processes.

Self-explanatory user interface:

- Interactive operation
- Different user levels
- Programmable evaluation
- Quick&Easy functionality via function keys
- Touchscreen operation as an option



# MarSurf XC 20



**Self-explanatory operation, as already known from MarSurf XR 20, i.e. two measuring disciplines presenting the same appearance. This gives your personnel safety and saves you time and money!**

## New functional characteristics:

- The zoom range can be moved within the overview field. You reach your evaluation section directly in the shortest possible time.
  - There is no quicker way!
- Multiple nominal profiles:
 

Several nominal profiles can be loaded within a series of measurements, making laborious single measuring series superfluous.

  - You couldn't do it any faster!



- Nominal profile parameterization:
 

Partial sections of a contour can be parameterized differently for nominal profile fit-in. Only the relevant sectors are considered for the evaluation.

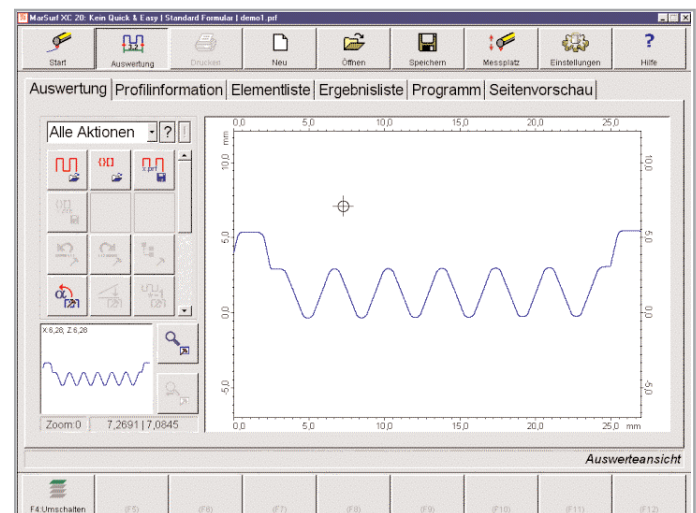
  - There is nothing more precise!
- Configurable action/tool box:
 

You only apply what you need for work.

  - Keep it as simple as possible!
- Associative elements:
 

Re-calculation of correlated elements after changing the basic elements. Evaluations are actualized according to respective modifications, thus avoiding double steps.

  - Save your expensive time!



## Mahr GmbH Göttingen

P.O. Box 1853, 37008 Göttingen, Germany  
 Brauweg 38, 37073 Göttingen  
 Phone +49-551-7073800, Fax +49-551-7073888, E-mail: info@mahr.de

© by Mahr GmbH, Goettingen

We reserve the right to make changes to our products, especially due to technical improvements and further developments. All illustrations and technical data are therefore without guarantee.